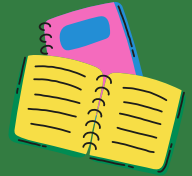




1st May 2026

# Redhill Primary Academy Mail on Friday



Email us at: [parentcontact@redhillprimary.co.uk](mailto:parentcontact@redhillprimary.co.uk)

## **Bank Holiday - Monday 4<sup>th</sup> May**

Please remember that school will be **closed** on Monday for the May Day Bank holiday.

We wish you all a wonderful weekend and look forward to welcoming the children back in to school on Tuesday 5th May.

## **Year 6 SATS Week** **Office Closed**

The school office will be closed to visitors from Monday 11<sup>th</sup> May until Friday 15<sup>th</sup> May, during the following times:

9am until 12 noon Monday to Friday.

## **No drop-in sessions** **Wednesday 13<sup>th</sup> May 2026**

Due to the Year 6 SATs, there will be no drop-in sessions on Wednesday 13<sup>th</sup> May.

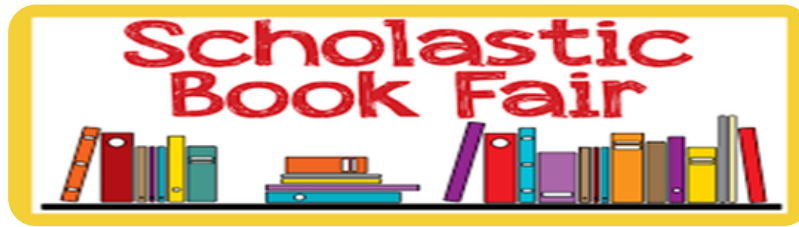
They will resume on Wednesday 20<sup>th</sup> May and we thank you for your understanding.

## **We are Marathon proud!**



We are incredibly proud of Mrs Mason from our school office, who took part in the London Marathon at the weekend. Running alongside thousands of people from across the country, Mrs Mason showed great determination and commitment in completing this amazing challenge.

Everyone at the school would like to congratulate Mrs Mason on this fantastic achievement. Well done, Mrs Mason!



We are excited to confirm that The Scholastic HALF PRICE Book Fair will be returning to Redhill on Friday 15th May and collected on the Wednesday 20<sup>th</sup> May (school days only). The Scholastic Book Fair is a pop-up celebration of reading that puts the very best books directly into our pupils' hands, all while raising rewards to spend on free books and essential resources for our school. Children will have the opportunity to view the books during school time and for those who are unable to make it an order can be placed online, the details to do this are:

[Book Fair Parents Hub - Scholastic Book Fairs](#)

Please be aware if you are visiting the Book Fair on these days it is cashless so orders will be placed through your mobile. It will be held outside the Year 3 and 4 classrooms.

### Sun Hats and Sun Cream

With the nicer weather approaching, please can you remember to provide your child with a sun hat and labelled sun cream. Children are not allowed to share sun cream and have to apply it by themselves.

If they find this difficult, it may be worth looking at the longer-lasting sun creams that can be applied, by yourself, before they come to school.

### Breakfast Club

We are delighted to share following a recent inspection, our Breakfast Club has successfully maintained its 5-Star Food Hygiene Rating. This is the highest possible rating and reflects our continued commitment to providing safe, clean and high-quality food for our children every morning.



## Morning Drop-Off Safety Reminder

Please could we kindly remind parents and carers of the importance of keeping our school site safe during morning drop off.

We have noticed some children playing with the slate along the path edges, running around the back path of the school building and jumping off walls while playing as they queue at the school gates. Whilst we understand that mornings can be exciting, these behaviours can pose a risk to both children and adults who are walking around the site. We would therefore be grateful for your support in encouraging the children to walk sensibly around the grounds and discouraging running, climbing or jumping off walls.

We thank you for your support with this.



We're excited to share that our school has joined *SchoolCycled* - a fun, hands-on recycling project that turns our plastic bottle tops into real rewards! Pupils and families collect bottle caps (nice and clean, please!), which are sent off to MYGroup to be recycled. For every kilogram collected, we earn 250 Earth Tokens that we can swap for brilliant goodies like benches, play equipment and colourful signs - all made from the very plastics we've collected!

We'd love you to spread the word and encourage family and friends to help us collect even more bottle tops. It's a great way for children to learn about looking after our planet while seeing their efforts transformed into something amazing right here at school. Keep those bottle tops coming in!

Collection boxes will be ready and waiting in the school foyer, nursery and the DT area, so it's super easy to get involved.





# Themed Spring RAFFLE


For our spring raffle, each year group has been allocated a theme - we are asking for donations (in exchange for Mufti) of anything to do with the assigned theme that can be put into a hamper to form one of the raffle prizes!


**17 MUFTI DAY IN EXCHANGE FOR DONATIONS - FRIDAY 15<sup>th</sup> MAY**


**17 RAFFLE DRAW TAKES PLACE - WEDNESDAY 20<sup>th</sup> MAY**

**17 ALL PRIZES GIVEN OUT AT SCHOOL - 21<sup>st</sup> / 22<sup>nd</sup> MAY**

<p><b>Nursery</b> Sweets and Chocolate</p> 	<p><b>Reception</b> Crafty</p> 	<p><b>Year 1</b> Games &amp; Toys</p> 	<p><b>Year 2</b> Drinks</p> 
<p><b>Year 3</b> Books</p> 	<p><b>Year 4</b> Spa</p> 	<p><b>Year 5</b> Summer</p> 	<p><b>Year 6</b> Garden</p> 

 All tickets are available to purchase online at PTA Events

 When the prize draw has been held, all winning ticket holders will be notified immediately via email

 All prizes will be given out to the children named on the booking/ticket

